

Kruger to Canyons Climate Change Initiative

Emma Archer, Claire Davis, Rebecca Maserumule, Caesar Nkambule, Nikki Stevens

Climate Change

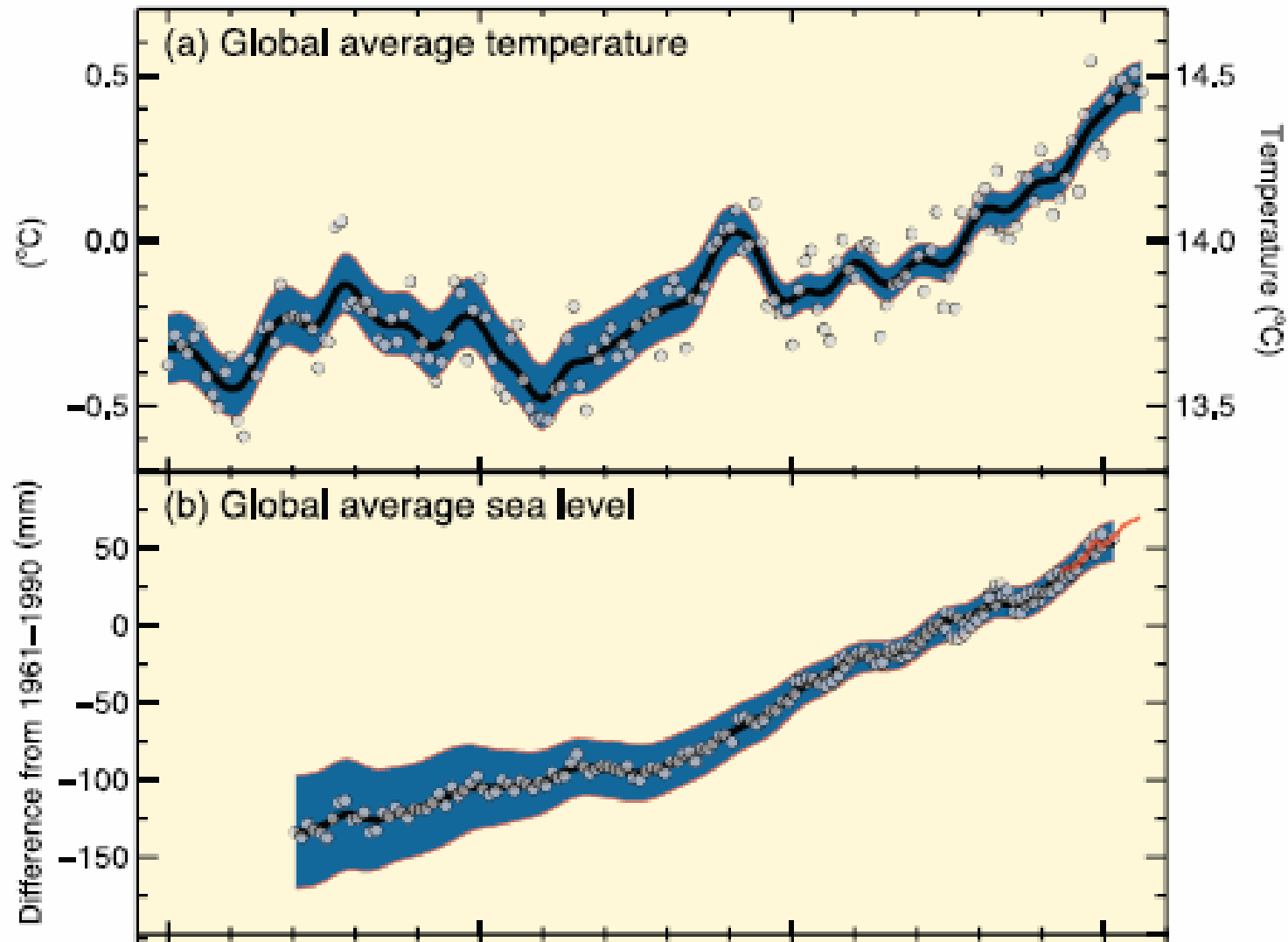
Email: cdavis@csir.co.za; nstevens@csir.co.za

Tel: (011) 358 0168; (011) 358 0151



Global Climate Change is unequivocal

CHANGES IN TEMPERATURE, SEA LEVEL



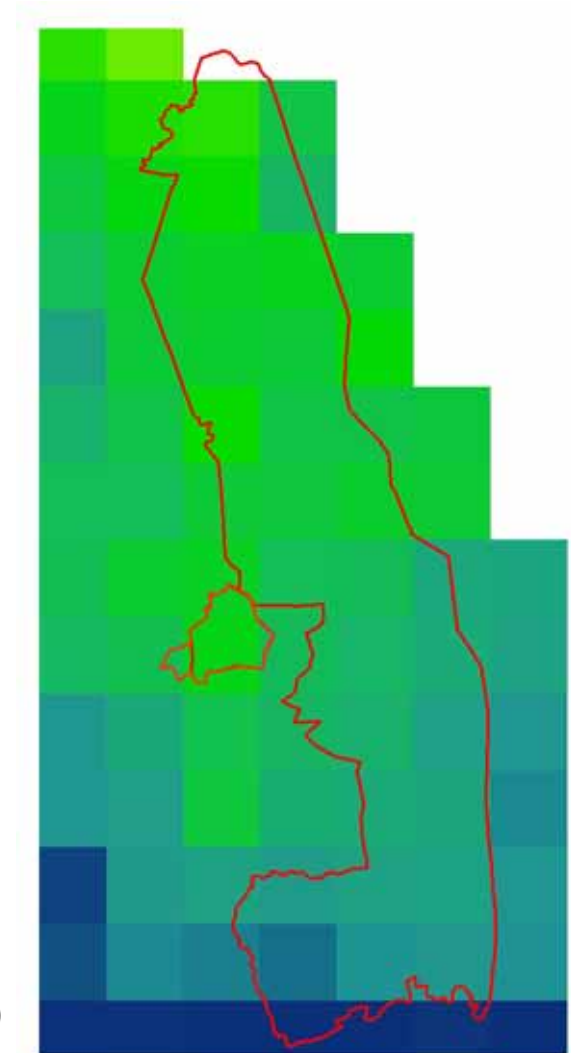
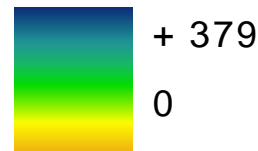
Global Climate Change implications

- Atmospheric temperature changes
 - Ocean temperature changes
 - Atmospheric and ocean current circulation
 - Snow and ice cover (albedo)
-
- Change in mean annual temperatures
 - Changes in phenology
 - Shifted seasons and timing events e.g. bird migration, date of first leaf
 - Species range shifts
 - Shift to cooler areas: Towards the poles
 - To higher altitudes

Modeled predictions of climate changes in the K2C biosphere

- Temperature
 - rising minimum, maximum and average temperatures
- Rainfall
 - Increased rainfall variability, higher mean annual rainfall
- Evapo-transpiration
 - Increases
- Knock-on effects:
 - Health
 - Poverty
 - Agriculture
 - Water
 - Conservation

vs 1
Change in annual rainfall (mm)





What do we do with this information?

Kruger to Canyons Climate Change Initiative

Why K2C?

- Large climatic and topographical range
- Multiple different disturbances across a range of scales
- Diverse array of land-use and economic activities
 - Commercial Agriculture and forestry
 - Communal/subsistence agriculture
 - Private conservation
 - National and provincial parks
 - Water and health sectors

Aim

To provide information to empower decision makers to reduce vulnerability to climate change

- Provide the latest climate change predictions for the area to stakeholders so they can:
 - Be aware of what can happen in the future
 - Plan ahead
 - adapt (deal with) climatic changes that threaten economic and natural resource sustainability

How?

Series of stakeholder workshops

- Stakeholder outreach and communication in K2C
 - Private conservation
 - National and provincial conservation
 - Commercial agriculture
 - Water
 - Health
 - Municipalities and planning

What does this mean for you?

- Local stakeholders will have:
 - Access to climate information
 - A better understanding on how to use the information and the limitations of the data
 - Ability to improve decisions made and resilience to climate change and risk.

The outcomes of stakeholder workshops?

- We need to know how will stakeholders benefit the most
 - What information is relevant?
 - Challenges to using info?
 - What is the most useful format for specific users
 - Raw data
 - Graphs
 - Interactive website
 - Booklets
 - Talks and presentations?

Program: 2009-2010

- Initial stakeholder engagement
 - Identify interested and key stakeholders
 - Understand potential usage, needs and current limitations
 - Meetings and questionnaires
- Outreach workshops
 - Provide information
 - Discuss the relevance
 - Feedback on this information
- Website will be developed
 - Ensure ongoing communication through a web-based portal
- More widespread stakeholder engagement (2011)

Are you interested?

cdavis@csir.co.za

nstevens@csir.co.za

For more info: www.rvatlas.org

